

Friday Flyer October 5, 2007

Please make sure you visit the download page on Dr. Feeney's Wiki  
<http://debfeeney.wikispaces.com> Recent activities as well as forms  
for Brainstormers will be available for you on that site.



#### Join A Parent Focus Group (A Reminder)

The Student Development Committee, comprised of teachers and administrators, was formed to address the district's goal for students to develop and achieve academic, social, and emotional success. The committee is hosting interactive Focus Group Meetings with parents to discuss character traits and how they relate to a positive learning environment.

If you are interested in participating, RVSP to Rebecca Leafman,  
DPM-West Assistant Principal/Director of the Student Development  
Committee, [rleafman@lfelem.lfc.edu](mailto:rleafman@lfelem.lfc.edu), by Wednesday, October 10th  
Please indicate which meeting you plan to attend.

APT Parent Awareness presents . . . Finding Joy in the Journey: Helping Your  
Child Balance All That Life Has to Offer on Wednesday, October 24, 2007, 9:15 –  
10:30 A.M. in the District 67 Administration Center, Baggett Room. Featured  
Speaker: Rev. Dr. Penny L. Robbins. The goal of this program is for parents  
to:

- Develop strategies for helping children discover their value through their activities
- Learn how to prioritize their own agenda for their child
- Discover new tools they can use to find better balance
- Discuss the importance of “downtime” for everyone

Questions? Contact your school Parent Awareness

Representatives: Megan Andress (847) 234-9917, [mfandress@aol.com](mailto:mfandress@aol.com); Stephanie Klein (847) 234-0273, [sklein@prodigy.net](mailto:sklein@prodigy.net). For more information:  
[http://www.lfelem.lfc.edu/apt/apt\\_page.htm](http://www.lfelem.lfc.edu/apt/apt_page.htm).

Included on the down load page is the fall Brainstormers' brochure. A copy of the brochure was sent to all families of 2nd through 8th graders last week.



**There were changes to the dates for the Speech and Drama competition meeting and class. It will be starting a week early.**

Families registering for the two offerings will be receiving the updated information with their confirmation. There is also a Brainstormers' link on the district home page that leads to a Brainstormers' website. This site includes up-to-the-minute information and downloads of specific class handouts.

At our last APT meeting I had mentioned that the pick up/drop off procedures were going well. Please make sure you do not drop off your children until 7:40. We do not have supervision until that time and the children cannot be on the playground unattended. Our number of walkers/bike riders has increased. For safety reasons they will not be dismissed until the busses have left. If you need to pick up your children, please use the front driveway. The city prohibits parking and or picking up on Spruce. We are not able to supervise cars and children that do not use our pick up procedures.



*You may access the fall 2007 edition of the Parent Mentor Bulletin through a link on the NSSSED website at [www.nssed.org](http://www.nssed.org) or directly at the Parent Mentor website at [www.nssedparentmentor.org](http://www.nssedparentmentor.org).*

District 67 APT Community Service  
Family Winter Outerwear Drive

October 1 – 15, 2007

October 1st through October 15th, each school in District 67 will be collecting donations of new or gently used, clean winter outerwear you & your children may have outgrown or no longer need. Please consider donating any of the following items:

Coats  
Mittens  
Hats  
Scarves  
Boots  
Snow pants



Please drop off all donated items to the lobby of your child's school.

We intend to donate the clothing to Carman School in Waukegan, A Safe Place, or another needy organization we become aware of in our area. 81% of the children at Carman School are from low-income families. A Safe Place offers the only comprehensive service program for domestic violence victims & their children in Lake County.

Questions? Please contact your school APT Community Service Representative or Marianne Wood, APT Executive Board Community Service Chair, 847-604-8192 or [mariannewood@att.net](mailto:mariannewood@att.net)

Thank You!

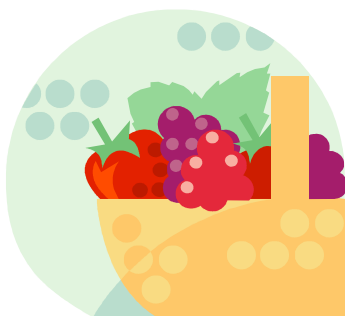
Thanks to all of you that have submitted your emails to the Sheridan Listserve. We are up to 200 and still growing!!! We will be sending hard copies until the week of November 26th. Laptops will be available during Conference times or you can give the office a call for assistance.

Again the site for the listserve is [www.lfelem.lfc.edu/schools/listserve/html](http://www.lfelem.lfc.edu/schools/listserve/html)



All visitors to the school during school hours need to sign in, inside the office. This also includes volunteers for classrooms as well as lunch.

Please remember to pack a healthy snack for your child. Helpful suggestions can be found in the District Wellness Policy on the District Home Page [www.lfelem.lfc.edu](http://www.lfelem.lfc.edu)



Due to questions about the policy on snacks at school, the wellness committee has issued a clarification to the information you received this summer from Dr. Griffith. If you did not get that communication, please contact the office.

*We would like to make a clarification regarding the Healthful Food and Beverage. Options for School Functions list that was sent to District 67 families in August. The list that was compiled by the Local Wellness Policy Committee is consistent with the Dietary Guidelines for Americans and should be used as the primary resource when selecting food/beverage options for your child's classroom. In the event that there is a student with a severe allergy in your child's class, we ask that you communicate with the school nurse to make sure your snacks are safe for everyone in that class. If you have any questions regarding this clarification, please contact your school's principal.*

LOCAL WELLNESS POLICY COMMITTEE

Updated News

### ***Self-Advocacy Student Support Groups Planned***

*All District 67 schools are pleased to be offering Self-Advocacy Student Support Groups, designed as part of ongoing efforts to reduce the occurrence and impact of bullying. These groups, set to begin in October, will meet once per week for six weeks. A school social worker or school psychologist will facilitate the groups. If this opportunity might be of interest to your son or daughter, or if you have any questions,*

*please e-mail Joe Malin, Student Services Coordinator,  
jmalin@lfelem.lfc.edu.*

**Upcoming Events**

10/8/07-Columbus Day-no school  
10/9/07-Tri-district Institute Day-no school  
10/22-10/26-Red Ribbon Week  
10/24-Picture Retakes  
10/25-10/31-Bill Bucsinisky  
10/26-APT Monster Mash Halloween Party  
10/30-4th Grade Social Studies Museum Express  
11/2-Sheridan Spirit Day  
11/4 Daylight Savings Day begins  
11/9-Institute Day-no school

In addition to our Friday Flyer, you can visit our new on line website  
<http://debfeeney.wikispaces.com> Copies of flyers and community events will be  
listed on my wiki. Click the link labeled Downloads to get this timely  
information.  
Have a Wonderful Weekend!!